



College of Southern Idaho Fine Arts Center



Technical Specifications and Information CSI Fine Arts Auditorium

Camille Barigar - presenter
(208) 732-6288
cbarigar@csi.edu

Dan MacLerran, Mike Crane, and Jud Harmon – technical crew
(208) 732-6790
dmacLerran@csi.edu, cCrane@csi.edu, judharmon@csi.edu

CSI Fine Arts Center – Sound Equipment Inventory

Updated February 2016

Sound Console

- ❖ 1 Yamaha M7CL/48-ES 48 Channel Mixer – 1 House Mix and 4 Monitor Mixes available.
- ❖ Monitor Mixes are mixed from the Front of House
 - We do not have a separate Monitor Mixing Console Available.
- ❖ Sound Console is located in the House in a permanent position.
 - Located In House at the Center between the Lower and Upper Section. It is in a raised area that is completely open from the Front and the Top – but is closed towards the audience in the back. See picture.



Main Speakers

- ❖ The College of Southern Idaho Fine Arts Auditorium has a Stereo Speaker System utilizing The “Bose Room Match System”
 - View this link for more details:
 - http://worldwide.bose.com/pro/en_us/web/progressive_directivity_array_modules/page.html

House Sound

- ❖ Auditorium Loudspeakers: @ Left and Right Balcony/Proscenium Locations
 - Bose RM 055x05
 - Bose RM 070x05
 - Bose RM 090x10
 - Bose RM 090x20
 - Bose RMAFSM
- ❖ Auditorium Subwoofers: @ Left and Right Balcony/Proscenium Locations
 - Bose RMS215

Stage Monitors – 4 Mixes Available

- ❖ Stage Monitors: BOSE
 - Bose Panaray 620M (Quantity 6)
 - 25’ 12AWG NL4 Speaker Cables (Quantity 6)

Power Amplifiers:

- ❖ Main System Power Amplifiers:
 - Left Array Bose RM8500N (Quantity 4)
 - Right Array Bose RM8500N (Quantity 4)
 - Subwoofer Array Bose RM8500N (Quantity 4)
 - Stage Monitors Bose RM8500N

Microphones

- ❖ 10 Shure SM 58
- ❖ 10 Shure SM 58 ULXS4 UHF - Wireless HH Mics
- ❖ 10 Shure ULX UHF – wireless Lapel/CountryMan mics (E6IOW6T1SL)

- ❖ Antenna Distribution System: Shure UA845 Antenna Distribution System
- ❖ Additional Mics – Assortment of the following:
 - Shure SM57
 - Shure SM 81
 - Shure MX202BC (Overhead Mics)
 - AKG Drum Kit Package.
 - AKG 535 EB
 - Crown PCC160
 - AKG 414
 - Passive Whirlwind DI Boxes

Mic Inputs:

- ❖ 16 XLR Lines from Stage Right and 16 XLR lines from Stage Left via Network Stage Boxes located Down Stage Left and Right from the Proscenium.

Play Back Units

- ❖ 1 TASCAM CD 200IB CD Player/Ipod Dock
- ❖ 1 TEAC CD player

Recording Units

- ❖ (Must provide own CD -R Disc)
- ❖ 1 TASCAM CD-RW901SL CD Recorder (CD -R format)

Stands and Cabling

- ❖ 10 Microphone Stands (includes 10 boom-stands) (Tripod Bases)
- ❖ 10 Short Microphone Stands with Booms – (Tripod Bases)
- ❖ Microphone Clips for SM58 and Wide Clips for Wireless Microphones
- ❖ 16 - Input XLR Lines from Stage Right and 16 - Input XLR lines from Stage Left via Network Stage Boxes located Down Stage Left and Right from the Proscenium.
- ❖ 1 - 16 Channel Microphone Snake (50')
- ❖ Assortment of Microphone XLR Cables (various lengths)
- ❖ Assortment of ¼" Speaker Cables, ¼" patch cables, RCA Cables, 1/8" to RCA Cables and Adapters

Communication Equipment Inventory

- ❖ 1 Clearcom PS 704 (2 Channel) power station (located at the Sound Position in House)
- ❖ 10 Wireless Clearcom Units Available RS 601 –
 - **All 10 units can be in continuous “Receive Mode” BUT only 3 can be in continuous “Transmit – or Talk” Mode at one time**
- ❖ 10 Clearcom CC-95 Wireless belt packs

Projection equipment inventory:

- ❖ LCD Projector Available with ADVANCED Request
- ❖ DVD/ VCR players Available with ADVANCED Request
- ❖ 16'Hx16"W projection screen (fixed on Grand Curtain Border)
- ❖ Cyclorama



CSI Fine Arts Center – Lighting Inventory

- ❖ 1 - ETC ION Lighting Console 2.0
This console is located in an elevated position at the back of the house in the lighting control booth. It is in a permanent position and CANNOT be moved. (See picture.)
- ❖ 1 – ETC FADW 2x10 Fader Wing
Attached to ION Console.



Lighting instruments are as follows:

LOCATION	INSTRUMENT	LENS/DIFUSION	QUANTITY
1 st FOH Beam	S4 575W	26*	14
2 nd FOH Beam	S4 575W	19*	7
	S4 LED LUSTR	26*	14
1 ST ELEC	D40 LUSTR	LRG & SM	10
	8" FRESNEL 575W	N/A	10
	S4 575W	19*	3
	S4 575W	26*	2
	S4 575W	36*	2
2 ND ELEC	D40 LUSTR	LRG & SM	10
	8" FRESNEL 575W	N/A	9
	S4 575W	26*	2
	S4 575W	36*	2
3 RD ELEC	11" VIVID	VERTICAL	10
	11" VIVID	HORIZONTAL	10
FOH BALCONY HL	S4 575W	26*	2
FOH BALCONY HR	S4 575W	26*	2

MISC. INVENTORY

S4 19* LENS – 6

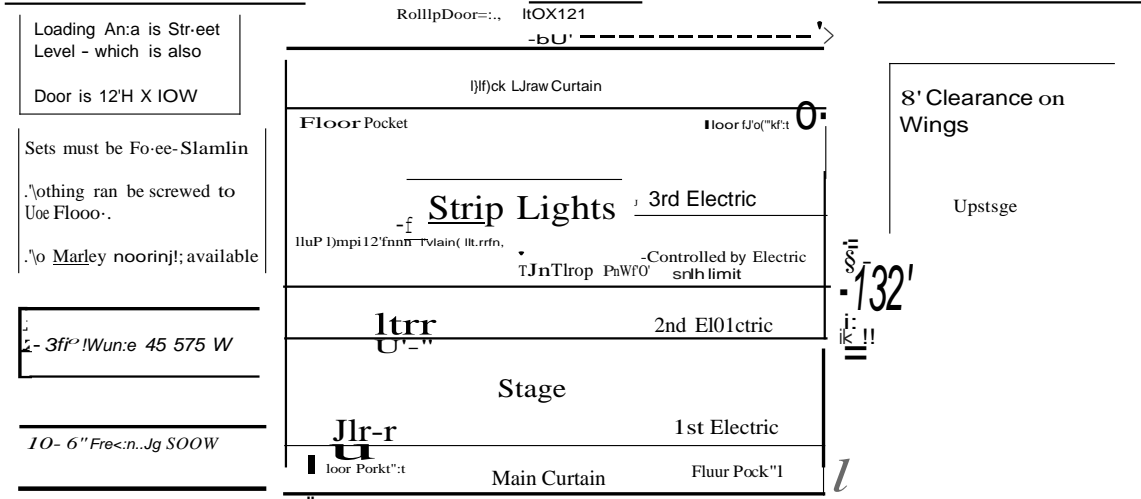
S4 26* LENS – 6

*** CSI Fine Arts Auditorium does not maintain a library of gels***

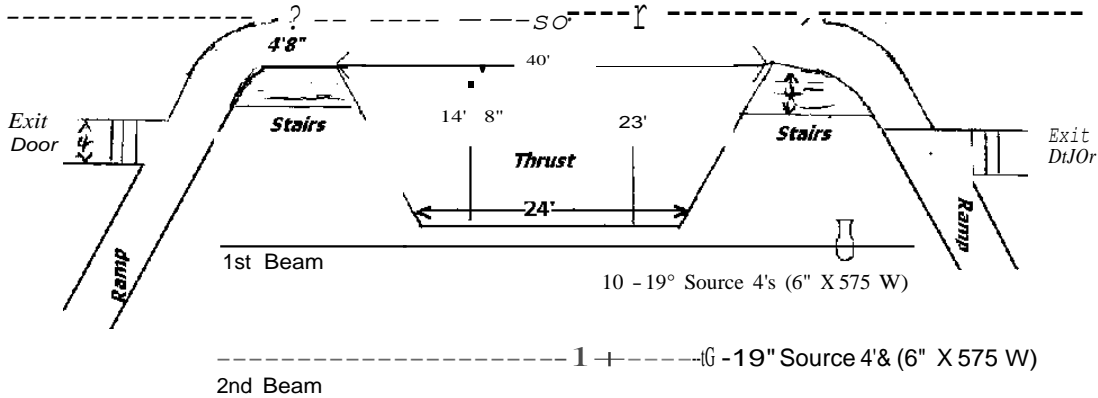
- ❖ Two Berkey Colortran 1000watt Spot Lights
 - Located at the rear balcony positions Left & Right of the light booth.
- ❖ We have no Ladder positions at this time.
- ❖ We have 4 – 5ft tall light trees at this time.
 - Each Tree has 2 – 500watt ellipsoidals.
- ❖ We have a 24ft wide by 15ft tall Scrim.
 - This is hung on a drop line upstage in front of the black crossover curtain.



CSIFine Arts Center-Stage Specs



iPTDsceniu
m Hig/Jt = 20'



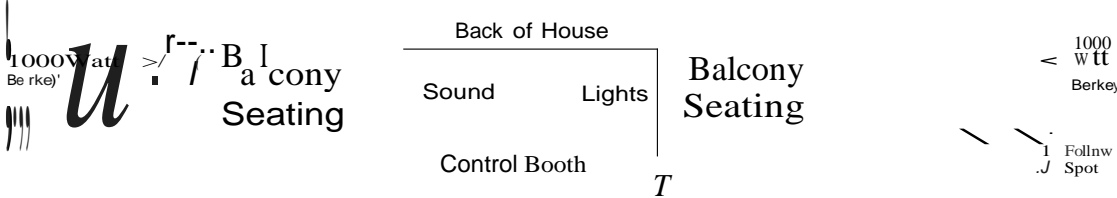
No Side Lights
 No Ladders
 Small Selection of Gels

No Cyc Lights
 NoCyc
 No Scrim

College Of Southern Idaho
 Fine Arts Auditorium
 315 Falls Ave W., Twin Falls, Id (208)73Hi790

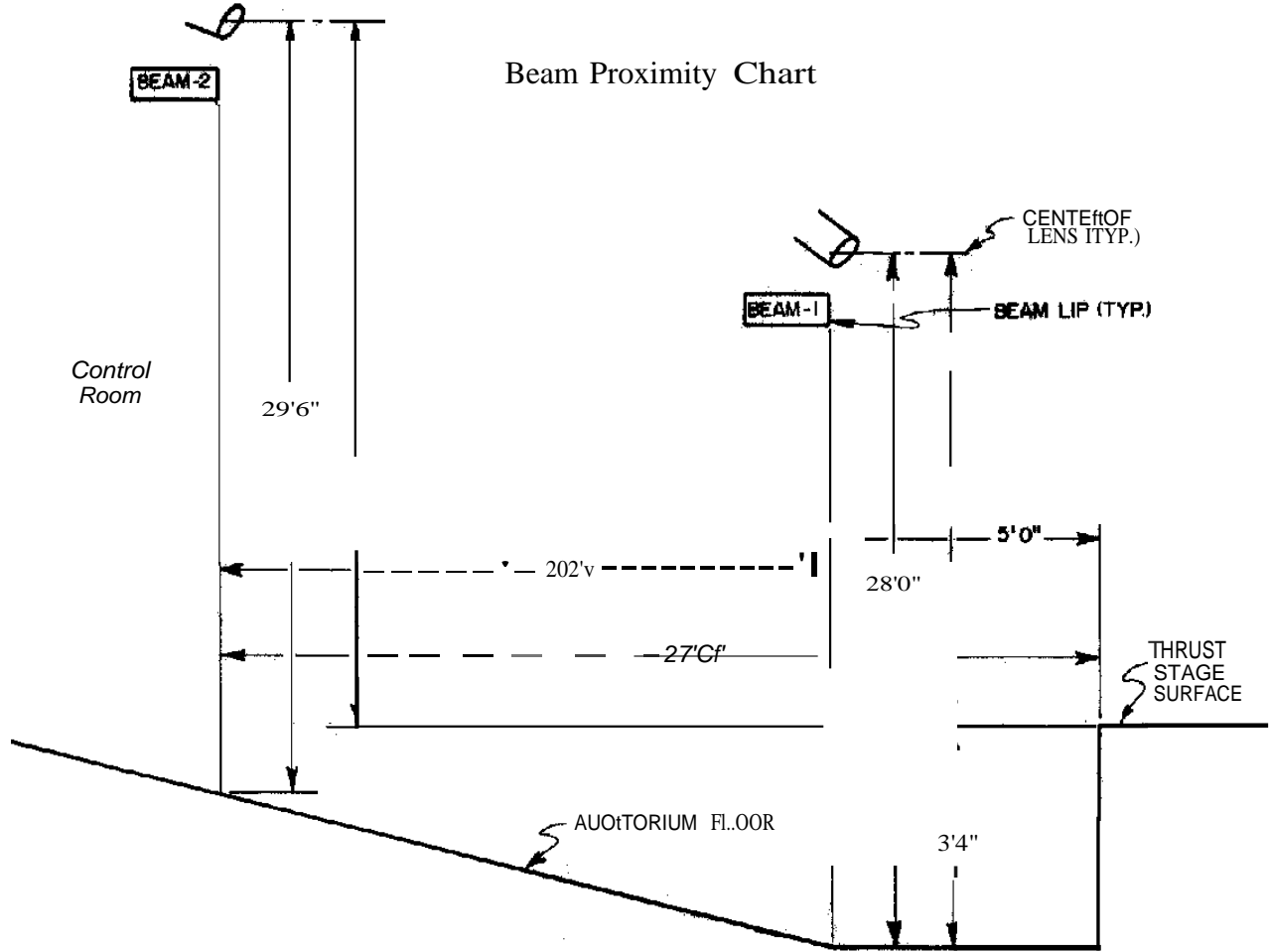
ETC Express 72/144
 LightBoard

Our Lights all use EILon Plus



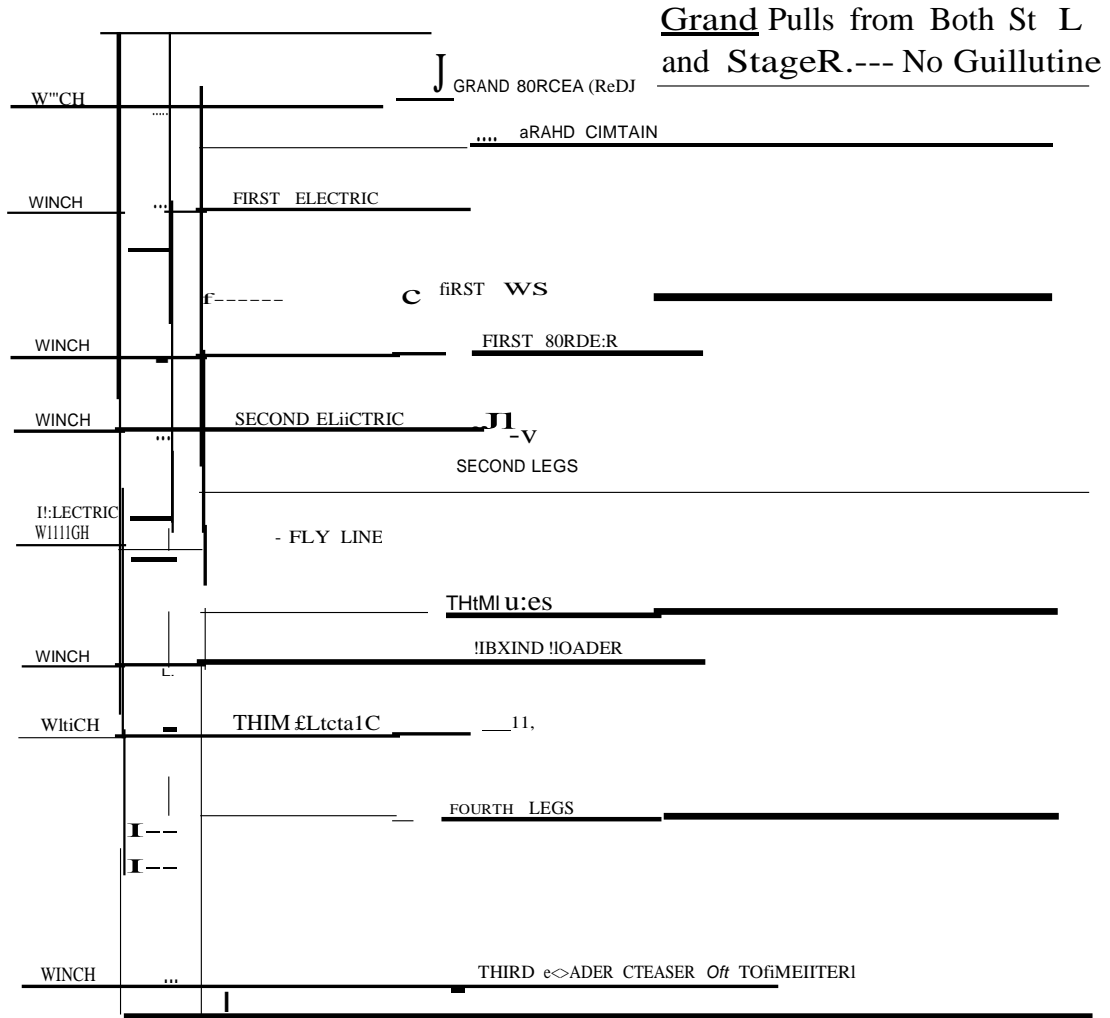


CSI Fine Arts Center-Beam Proximity Chart





CSIFine Arts Center-Stage Masking and Electrics



Stage Masking and Electrics

Note-- All winches are located Stage Right- Drawing is made as if you are looking up at the Grid from the floor. Rotate the Drawing so the Winches are on the Right and the Grand Board Faces front and you'll see where our Stage Masking and Electrics are located on our stage.

CSI Fine Arts Center– Orchestra and Soft Goods Inventory

- ❖ 1 Grand Drape - 25 oz. Red cotton velour, Traveler curtain consisting of 2-25' (W) by 20' (H) panels. -- Pull Cords Stage Left and Stage Right.
- ❖ 1 Grand Tormentor - 25 oz. Red cotton velour, 55 feet wide by 8 feet high
- ❖ 4 pair Tracking Legs - 20 oz. black cotton velour, 10 feet wide by 21 feet high – moveable to wings and to middle of stage.
- ❖ 3 Teaser Borders - 20 oz. black cotton velour, 63 feet wide by 8 feet high
- ❖ 1 Back Traveler heavy Black cotton manual draw. - 60 feet wide by 21 -1/2 feet high – pull cord is Stage Left.
- ❖ **THERE IS NO MID STAGE TRAVELER.**
- ❖ 50 Wenger music stands (Shared with the Music Dept.)
- ❖ 65 musician's chairs (Shared with Magic Valley Symphony/Music Dept.)
- ❖ 1 Conductor's Stand
- ❖ 1 Step Conductor's Podium
- ❖ 6 Wenger Sectional 4 Step Standing Choir Risers
- ❖ 1 Wenger Sectional 4 Step Standing Choir Riser (Reversed Section)
- ❖ Wenger – Seated Band Risers – 3 Straight sections, 4 Curved Sections for each level at 6", 18", and 24"
- ❖ 2 Wenger Sectional Stairs 24".
- ❖ 11 Wenger –Orchestra shells

DIRECTIONS TO TWIN FALLS AND THE COLLEGE OF SOUTHERN IDAHO



- ❖ Take Exit #173 off I-84 to Twin Falls, Idaho
- ❖ You will cross the Perrine Bridge and pass the Magic Valley Mall and end up on Blue Lakes Blvd
- ❖ Continue south on Blue Lakes Blvd until you reach Falls Ave
- ❖ Take a right (head West) on Falls Ave until you reach the main entrance to the College of Southern Idaho campus (turn right). This main entrance is located directly after (West) of the CSI electronic marquee. There is a stoplight at the entrance.
- ❖ The Fine Arts Building is to your immediate left (you will notice the bank of windows along the front of the building).
- ❖ The loading dock is at the end of the drive in the rear of the building (the west side).



Twin Falls Lodging

Apollo Motor Inn
296 Addison Ave W
Twin Falls, ID. 83301
208-733-2010

Best Western Twin Falls
1377 Blue Lakes Blvd N.
Twin Falls, ID. 83301
208-736-8000

Best Western Sawtooth Inn
2653 S Lincoln
Jerome, ID 83338
208-324-9200

Blue Lakes Inn
952 Blue Lakes Blvd N.
Twin Falls, ID. 83301
208-933-2123

Fairfield Inn & Suites
1788 Washington St N
Twin Falls, ID. 83301
208-734-8444

Hampton Inn
1658 Fillmore St.
Twin Falls, ID. 83301
208-734-2233

Hilton Garden Inn
1741 Harrison St N
Twin Falls, ID. 83301
208-733-8500

Holiday Inn Express
1658 Fillmore St.
Twin Falls, ID. 83301
208-732-6001

La Quinta Inn
539 Pole Line Road
Twin Falls, ID. 83301
208-736-9600

Quality Inn & Suites
1910 Fillmore St N
Twin Falls, ID. 83301
208-734-7494

Red Lion Canyon Springs Hotel
1357 Blue Lakes Blvd.
Twin Falls, ID. 83301
208-734-5000

Shilo Inn Suites
1586 Blue Lakes Blvd.
Twin Falls, ID. 83301
208-733-7545

Super 8 Motel
1260 Blue Lakes Blvd. N.
Twin Falls, ID. 83301
208-734-5801